

POLO TRACE II PLAT NO. 1

(A PART OF POLO TRACE P.U.D.)
BEING A REPLAT OF PORTIONS OF PALM BEACH FARMS COMPANY PLAT NO. 1, PLAT BOOK 2, PAGE 26, AND LYING IN SECTION 9, TOWNSHIP 46 SOUTH, RANGE 42 EAST, PALM BEACH COUNTY, FLORIDA

MATCH LINE
(SEE SHEET 9 OF 12)

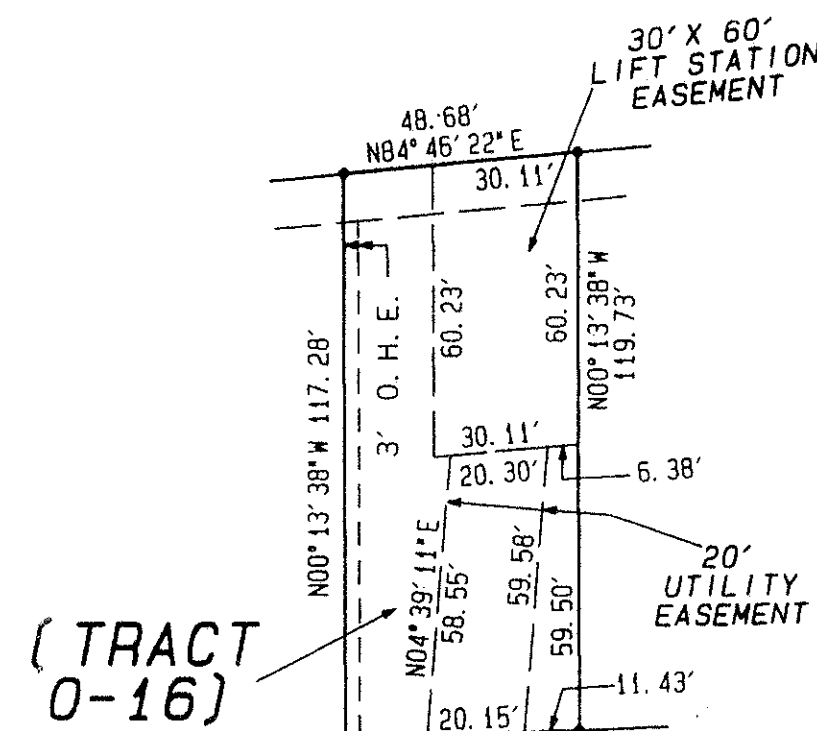
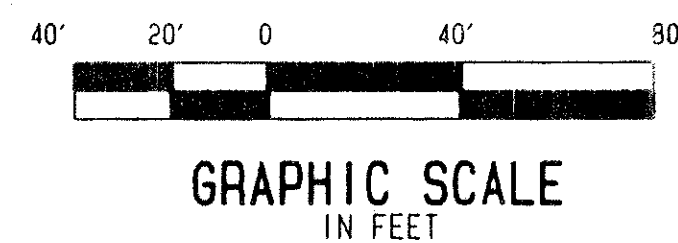
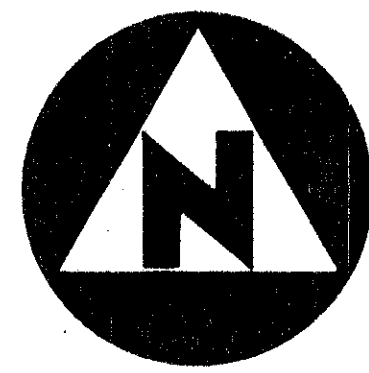
MATCH LINE
(SEE SHEET 6 OF 12)

MATCH LINE
(SEE SHEET 6 OF 12)

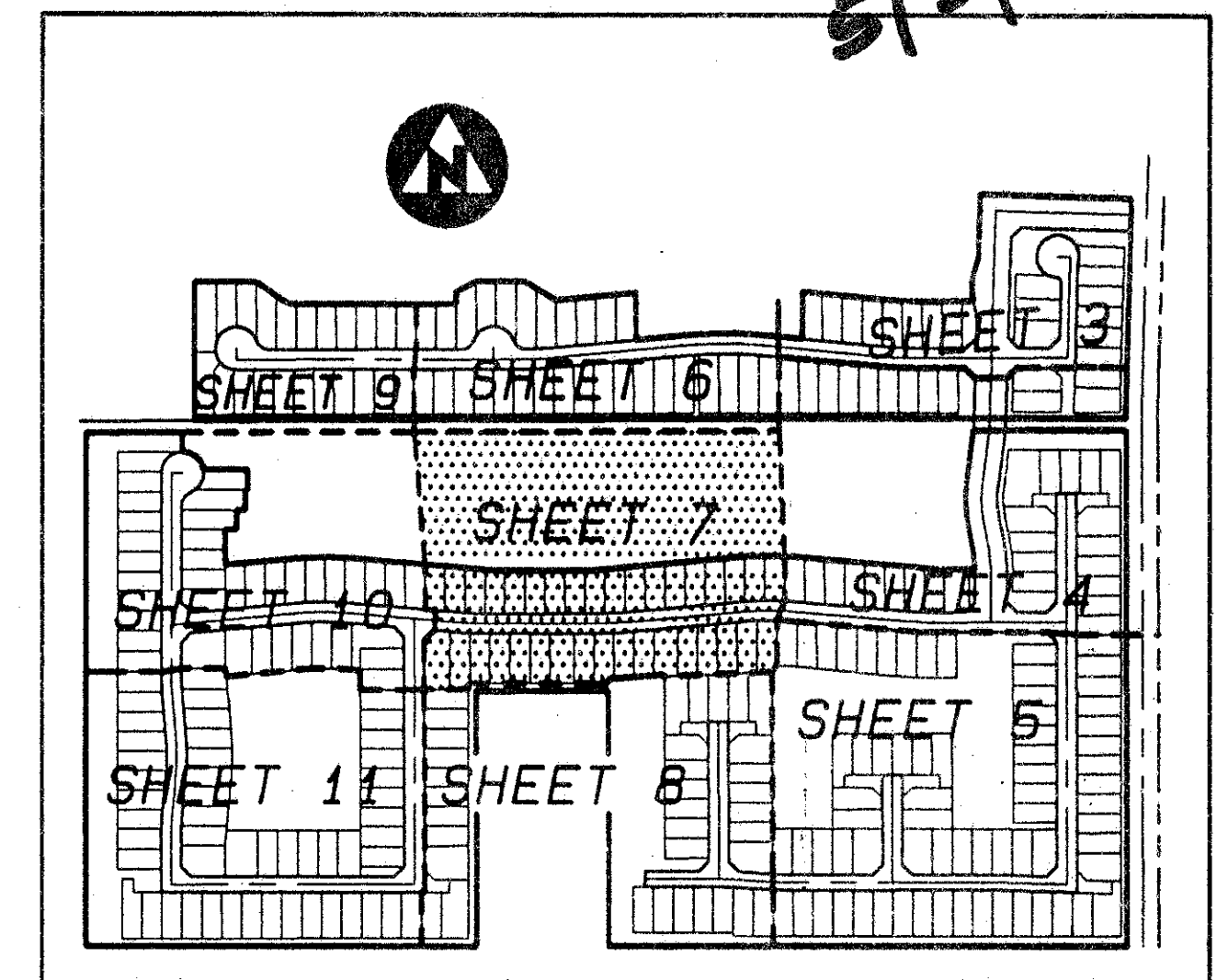
MATCH LINE
(SEE SHEET 4 OF 12)

MATCH LINE
(SEE SHEET 10 OF 12)

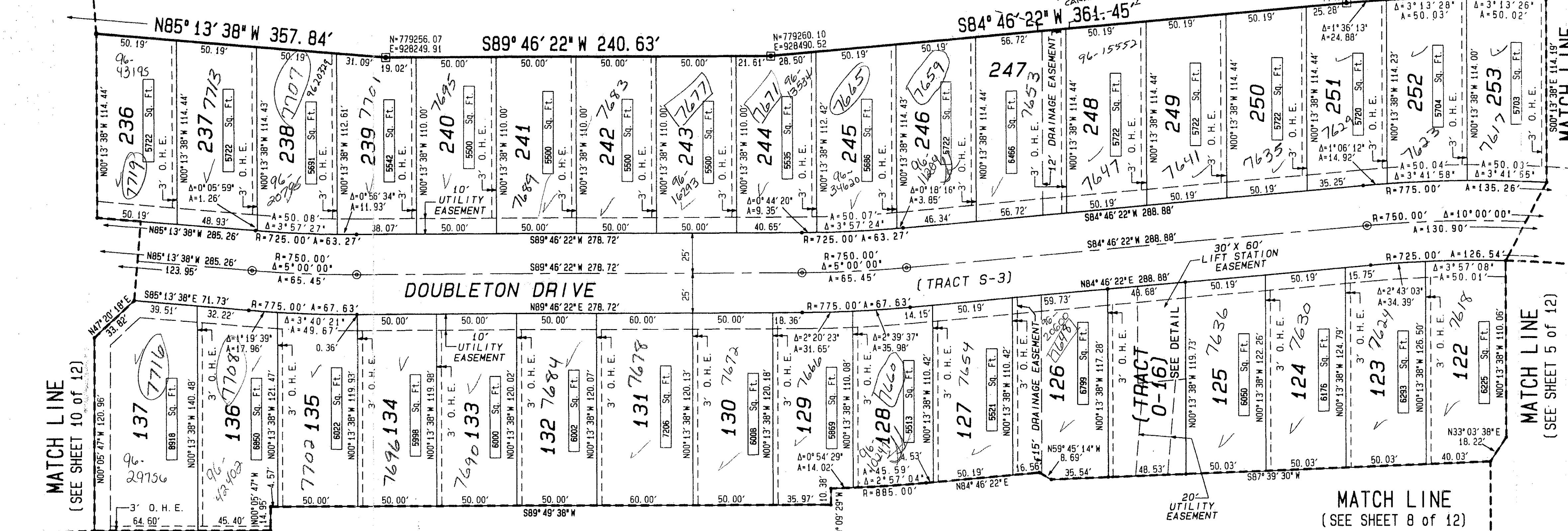
NOT A PART OF THIS PLAT



BLOCK 9
PALM BEACH FARMS
COMPANY PLAT NO. 1
(PLAT BOOK 2, PAGE 26)



KEY MAP
(NOT TO SCALE)



SURVEYOR'S NOTES AND LEGEND:

- BEARINGS SHOWN HEREON ARE BASED ON AND RELATIVE TO THE ASSUMED BEARING OF NORTH 89°57'05\"
- IN THOSE INSTANCES WHERE UTILITY/DRAINAGE STRUCTURES ARE CONSTRUCTED IN CONFLICT WITH THE PLATTED PERMANENT CONTROL POINTS (P.C.P.) POSITION, STRADDLERS MONUMENTED AS PERMANENT CONTROL POINTS WILL BE SET TO REFERENCE THE PLATTED P.C.P. POSITION.
- C/L DENOTES A CENTERLINE
- SQ. FT. DENOTES SQUARE FEET
- DENOTES A SET #2424 PERMANENT REFERENCE MONUMENT (P.R.M.)
- DENOTES A FOUND PERMANENT REFERENCE MONUMENT (P.R.M.)
- ⊙ DENOTES A SET #2424 PERMANENT CONTROL POINT (P.C.P.)
- (R) DENOTES RADIAL LINE
- P.C. DENOTES POINT OF CURVATURE
- P.R.C. DENOTES POINT OF REVERSE CURVATURE
- P.C.C. DENOTES POINT OF COMPOUND CURVATURE
- P.T. DENOTES POINT OF TANGENCY
- 3' O.H.E. DENOTES OVERHANG EASEMENT
- N-123456.78 DENOTES NORTHING COORDINATE
E-123456.78 DENOTES EASTING COORDINATE

75/199

This instrument was prepared by Wm. R. Van Campen, R.L.S., in and for the offices of Bench Mark Land Surveying & Mapping, Inc., 4152 West Blue Heron Boulevard, Suite 121, Riviera Beach, Florida

BENCH MARK
Land Surveying and Mapping, Inc.
4152 West Blue Heron Blvd, Suite 121, Riviera Beach, FL 33404
Tel: (407) 844-9859 Phone (407) 848-2102

RECORD PLAT
POLO TRACE II
PLAT NO. 1

DWN	D/M	FB	DATE	WO.#	P180
CKD	FILE		SCALE 1" = 40'	SHEET 7 OF 12	

0633-001

SUBDIVISION Polo Trace II Plat No. 1
BOOK 75 PAGE 199 FLOOD MAP # 200A
QUAD # 51 ZONING PUD
SE # 21503.5 ZIP CODE 33446
PUD NAME SAME 9/4/04